

# Mixed Flow Dryer



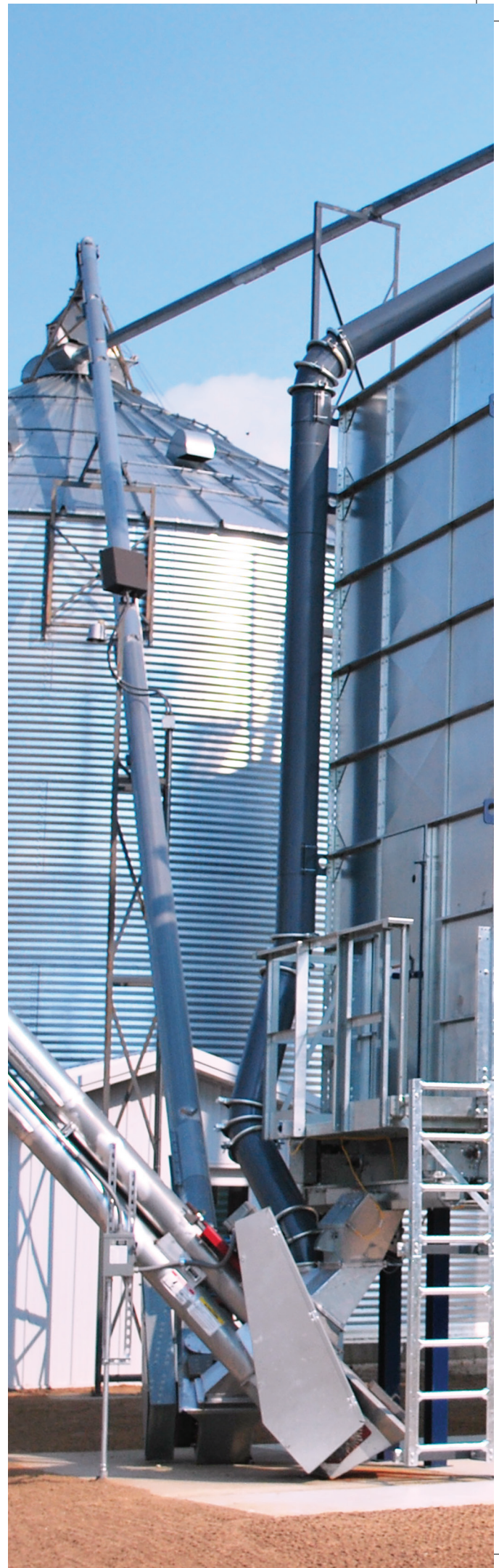


# Mixed Flow Dryer.

One of the most efficient dryers on the market.

For over 50 years, NECO has specialized in agricultural equipment engineering and manufacturing. NECO produces market leading grain dryers and aeration equipment for on-farm and commercial applications worldwide. Each dryer section is factory tested with comprehensive quality inspections being done before shipping. NECO provides hands on technical dryer service training and experienced technical support to ensure that you get the most out of your NECO dryer. The NECO mixed flow dryer is one of the most efficient dryers on the market, that maximizes test weight of dried grain and lowers your energy bill.

**AGI**  **NECO**



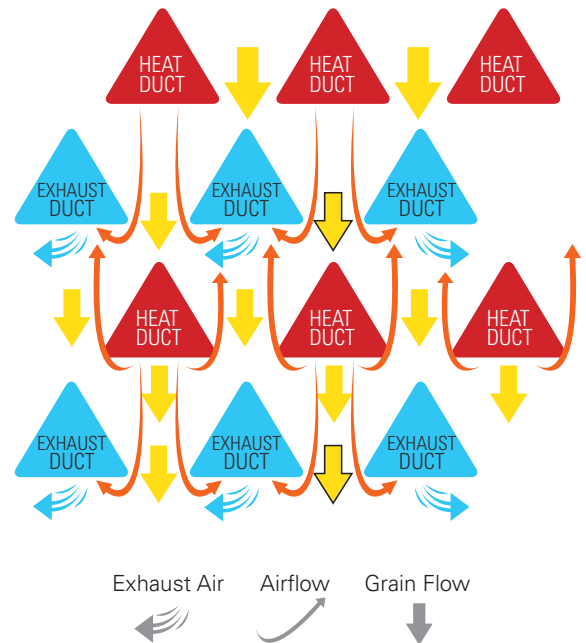








# Dryer Features



## Mixed Flow Drying Process

- Maintains the highest grain quality
- Allows for easy air and grain mixing throughout the drying process
- Consistent kernel to kernel moisture across the grain column
- Long retention time allows the grain to dry slowly, resulting in significantly higher test weights and higher quality product

## Screenless Galvanized Construction

- No screens to clean or get plugged, so airflow is maintained throughout drying season
- Maintains efficiency without regular cleaning
- Suitable for all crops from corn to canola, with no risk of plugging screens
- Up to 20% more fuel efficient than conventional screen dryers
- Heavy gauge G90 galvanized material for longevity

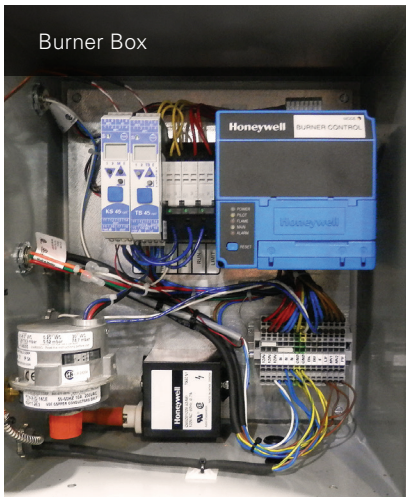
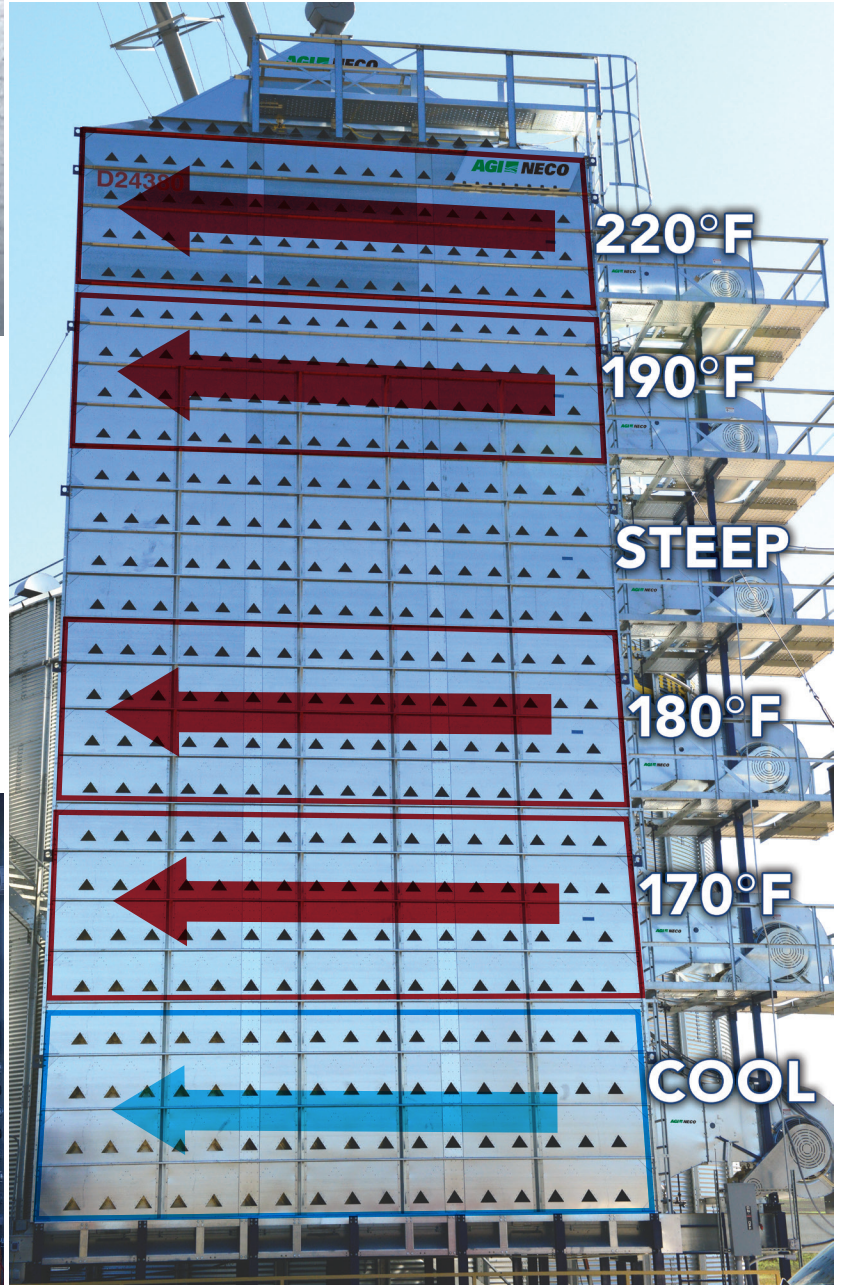




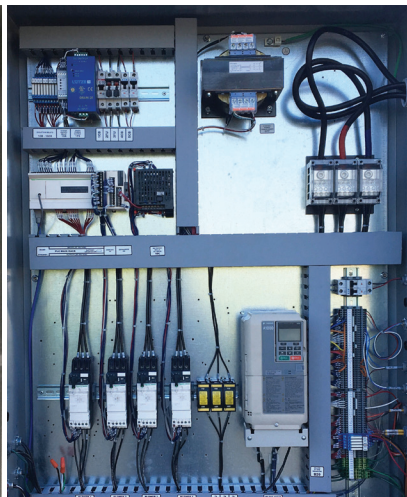
Forward Curved Blades

### Quiet & Efficient Fans

- Forward curved blades for consistent, high volume air flow at lower speeds
- NECO fans are quiet, producing just 80-90 dB
  - Competitive fans produce 120 dB or more
  - Hearing damage occurs at 120 dB
- Requires less fan HP to develop the necessary CFM required for drying



Burner Box



### Reliable Safety Features

- Proven Honeywell flame safety relay
- Accurate sequential ignition process
- Ultraviolet flame quality measuring
- Dual thermocouple measures both plenum temperature and high temperature limit

### Flexible Operation Capability

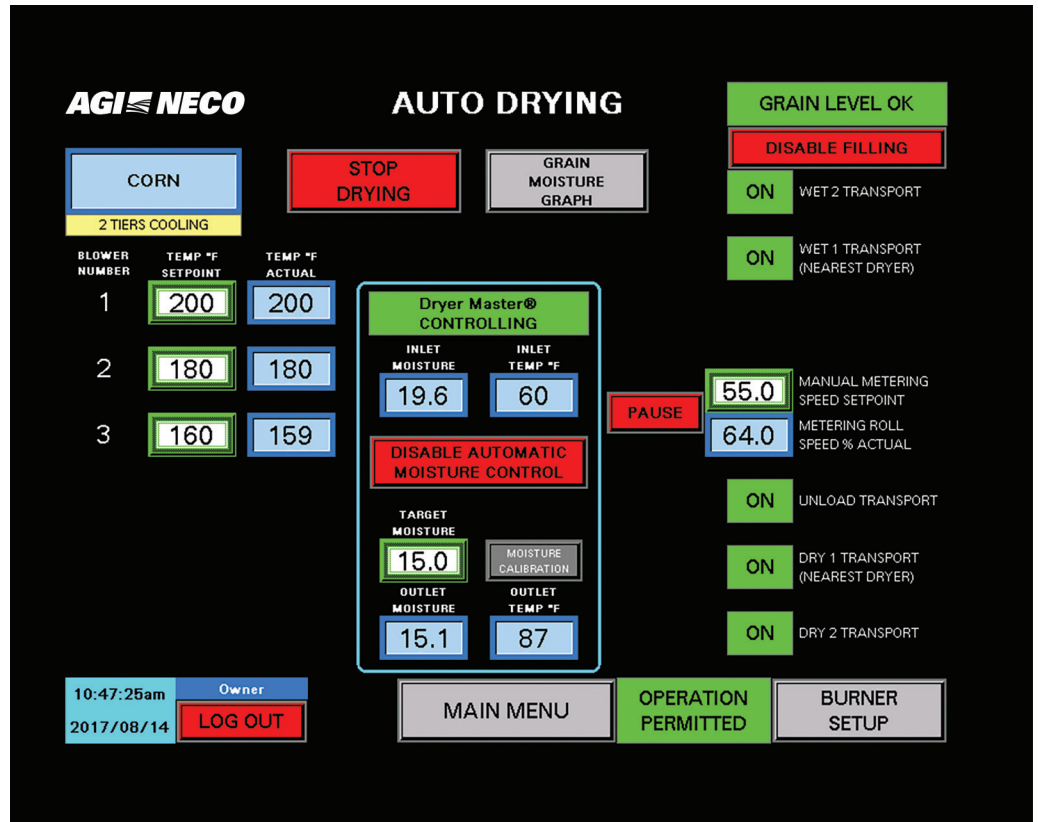
- Allows dryer to run in full heat or heat and cool modes on single burner dryers
- For multiple burner dryers:
  - Individual temperature settings for each burner adds unrivaled flexibility
  - Multiple options for drying include full heat, heat and cool, steeping or sweating



# Moisture Controls

## Commander Control

- PLC based dryer control system developed by NECO
- System uses state-of-the-art components
- Easy-to-use touch screen navigation with clear graphics
- Tracking and graphing capabilities to show drying progress
- Alarm and troubleshooting assistant
  - Self-diagnostic capabilities for quick troubleshooting
  - Quick visual reference of alarm history
  - Helps minimize repair time



DRYER MASTER provides high quality moisture control in the industry. DRYER MASTER's model based moisture control technology is embedded in NECO's control panel, which is a NECO EXCLUSIVE. Dual moisture sensors provide the information required to deliver accurate, consistent moistures, reduce over and under drying, maximize throughput and lower energy consumption.



## COMMANDnet (optional)

- Control in the palm of your hand
- Easily connect through any device with web Browser
  - Tablet, smart phone, laptop
- Cellular gateway technology
  - If you have web access on your phone you have access to your dryer
- Receive alarms and callouts via text, or e-mail
- Manage your dryer operation remotely



DRYER MODEL	NUMBER OF TIERS	HOLDING CAPACITY MT	CORN					WHEAT		CANOLA	RICE	TECHNICAL SPECIFICATIONS							
			5 PTS DRYING		8 PTS	10 PTS DRYING		5 PTS	5 PTS	5 PTS	4-PTS ALL HEAT	NUMBER OF BLOWERS	TOTAL CFM OF BLOWERS	MAX BURNER OUTPUT MMBTU/HR	MAX UNLOAD CAPACITY (BPH)	TOTAL HP OF BLOWERS / # BLOWERS	TOTAL HP ALL MOTORS	FILL HEIGHT GRAVITY FILL (FT)	TOTAL LENGTH (FT)
			ALL HEAT 210°F	DRY & COOL 210°F	ALL HEAT 210°F	ALL HEAT 210°F	DRY & COOL 210°F	ALL HEAT 210°F	DRY & COOL 210°F	ALL HEAT 15%-10%									
<b>16' DRYERS</b>	CSA models available for 16' dryers																		
D1670	5	674	631	463	417	336	298	621	446	297	591	1	23,500	6.0	982	20	23	21.2	24
D1680	6	770	740	589	488	393	361	714	561	348	692	1	27,500	6.0	982	20	24	23.2	24
D1690	7	866	860	720	567	457	372	833	691	404	804	1	32,000	6.0	982	25	29	25.2	24
D16106	8	962	981	851	648	522	443	1003	863	461	918	2	36,000	12.0	1527	30	34	27.2	27
D16120	10	1155	1250	1037	826	667	596	1240	1017	588	1169	2	47,000	12.0	1527	40	46	31.2	27
D16140	12	1347	1468	1277	969	782	721	1426	1233	689	1373	2	55,000	12.0	1527	40	46	35.2	27
D16160	14	1539	1732	1458	1145	924	815	1740	1454	813	1620	3	65,300	18.0	2250	55	61	39.2	27
<b>24' DRYERS</b>	CSA models available for 24' dryers																		
D24108	6	1155	1109	883	731	589	541	1084	851	521	1037	2	41,200	12.0	1473	30	36	25.9	35
D24150	8	1443	1474	1279	973	784	665	1427	1230	693	1379	2	55,000	12.0	1473	40	50	27.9	35
D24180	10	1732	1687	1398	1108	891	797	1667	1369	793	1578	2	62,000	15.0	2291	50	65	33.9	35
D24210	12	2020	2201	1916	1454	1173	1082	2139	1850	1034	2059	3	82,500	18.0	2291	60	75	37.9	35
D24240	14	2309	2428	2061	1595	1284	1142	2380	2002	1141	2271	3	89,500	21.0	3382	70	85	41.9	35
D24260	16	2597	2928	2553	1934	1560	1415	2851	2470	1376	2739	4	110,000	24.0	6000	80	100	45.9	35
D24330	20	3174	3357	2931	2206	1775	1668	3382	2893	1717	3140	5	124,000	30.0	6000	100	120	53.9	35
D24380	24	3750	4098	3594	2693	2167	2013	4045	3524	2058	3833	6	151,500	36.0	6000	120	150	61.9	35
<b>32' DRYERS</b>																			
D32260	12	2693	2647	2499	1908	1399	1275	2542	2202	1359	2305	3	108,000	22.5	6000	90	110	40.6	43
D32340	16	3463	3521	3129	2538	1862	1565	3389	2941	1807	3179	4	144,000	30.0	6000	120	140	48.6	43
D32440	20	4232	4394	4071	3168	2324	2061	4235	3679	2258	4052	5	180,000	37.5	6000	150	180	56.6	43
D32500	24	5001	5268	4993	3798	2786	2550	5062	4418	2704	4829	6	216,000	45.0	6000	180	200	64.6	43

**Product Disclaimer:**

- Drying capacities represent NECO's best estimate of attainable wet bushel capacities based on a combination of actual field results and computer analysis
- Capacities will vary depending on outside temperature, humidity, initial grain temperature, crop maturity and variety, cleanliness of the grain, test weight, operating temperature, drying vs. cooling zones, etc
- Hot grain discharged from the dryer will dry an additional 1.5% - 2% when properly cooled
- Fill height listed is for a dryer with a 48" standard leg kit

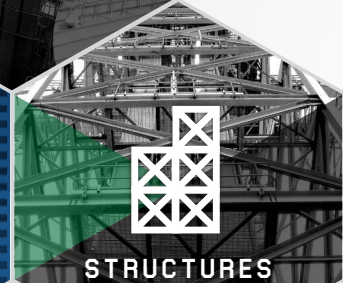
NECO reserves the right to change its products and specifications at anytime without notice or obligation.







STORAGE



STRUCTURES



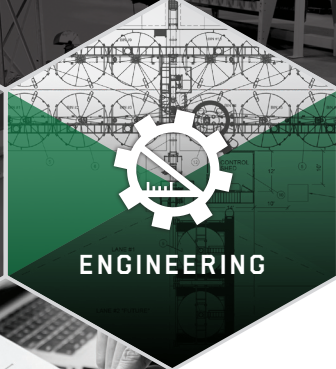
HANDLING



PROCESS



CONTROLS



ENGINEERING



PROJECT  
MANAGEMENT



**NECO is an AGI brand.**

AGI is a leading manufacturer of grain, seed, feed, food and fertilizer handling, blending, storage and conditioning equipment. Our brands are amongst the most recognized in the industry. The AGI product catalog includes portable handling equipment (augers, belt conveyors, grain vacs), permanent handling systems (bucket elevators, enclosed belt conveyors, chain conveyors, structural) and storage systems (aeration, drying, bins/silos, monitoring) that service various sectors for on-farm and commercial operations.



9364 N. 45th St, Omaha, Nebraska, USA 68152  
P 1.402.453.6912 | F 1.402.502.1709 | necodryers.com

AGGROWTH.COM  @aggrowthintl