

AGI

VIS

# Fertilizer Batching Systems & Equipment

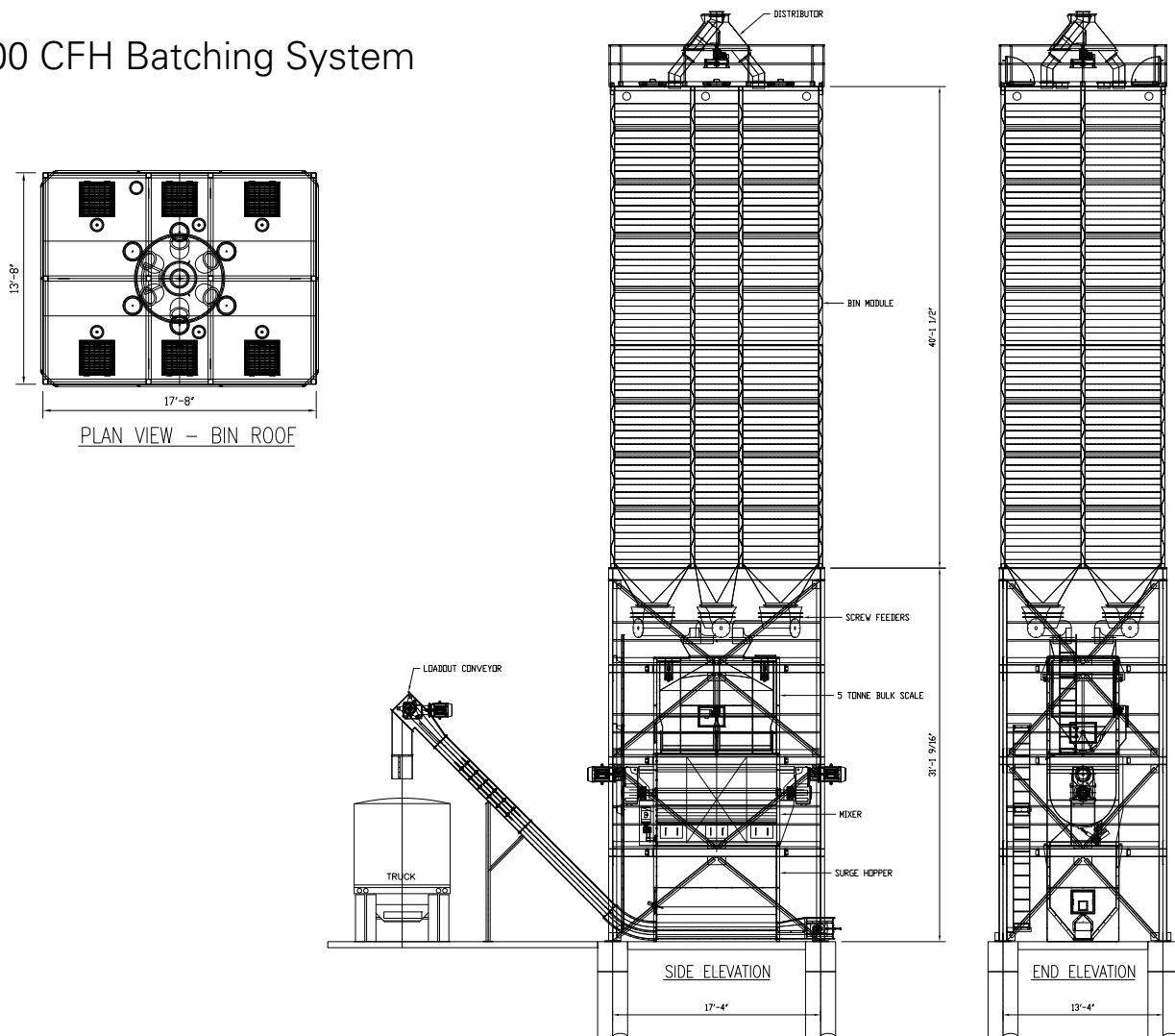


# Fertilizer & Overhead Batching

## Features

- Stainless Steel Overhead Bin Module with six separations up to 10,000 CF
- Mass Flow Bin and screw feeder design means better product flow
- One piece structural tower with multiple service levels
- Totally enclosed, legal for trade weigh hopper. Batching process – weighing of each ingredient individually – insures exact proportion of each ingredient every time, regardless of changes in product density
- Horizontal Mixer achieves coefficient of variation of less than 10%
- Rapid batching cycle - 1.5 minutes per batch – that can achieve throughput rates over 8,000 CFH (200 TPH @ 55 PCF)
- Short mixing time means less fines and dust
- Lower surge hopper complete with loadout drag conveyor
- Multi-stage batching allows for continuous production
- All 304 stainless steel components
- All components built to industrial high throughput standards
- All components designed for bolted fit and rapid installation

## 8,000 CFH Batching System





# Systems Components

**Distributor:** Six Hole, 12" Diameter, 50 Degree, Electric Distributor

- All stainless steel construction with heavy duty base plate and increased gauges
- Shaft mounted reducer with 0.33 HP motor, TEFC
- Limit switch positioning on all outlets
- Pre-fitted stainless steel spouts to bins

**Bin Module:** 10,000 CF, Six Compartment All Stainless Steel Bin Module, 14' x 18' x 40' H

- Four compartments, 1960 CF each
- Two compartments, 1120 CF each
- Manway, spout inlet flange and high level sensor mounting flange included on each compartment
- Mass flow style discharger hopper and flange on each compartment
- Poke hole included on each hopper
- Handrail on bin roof deck

**Support Structure:** Mild Steel Structural Frame 14' x 18' x 31' H

- One piece welded construction
- Includes service floors of galvanized serrated bar grating
- Galvanized access ladders included
- Enamel finish paint

**Batching Feeders:** Six 8,000 CFH Screw Feeders

- Stainless Steel Housing and heavy duty mild steel pipe and flighting
- 20 HP AGMA II, Shaft Mounted Reducer with direct coupled TEFC motor
- Flared inlet and hopper to match Mass Flow hoppers

**Batching Scale:** 200 CF (5 TONNE) Batching Scale

- All stainless steel construction
- Full length, drop bottom air operated gate
- Dual 50 HP AGMA II, Shaft Mounted Reducer with direct coupled TEFC motor

**Mixer Surge Bin:** 200 CF Surge Bin

- All stainless steel construction

**Loading Conveyor:** 8,000 CFH L-Path Drag Chain Conveyor (200 TPH @ 55 PCF)

- All stainless steel construction
- Pintle chain with UHMW bolted paddles
- 25 HP AGMA II, shaft mounted reducer with direct coupled TEFC motor

**CFH** = Cubic Feet per Hour | **TPH** = Tonnes per Hour | **PCF** = Pounds per Cubic Feet

## Other VIS Fertilizer Products

- Receiving systems with rates up to 1,000 TPH featuring stainless steel Bucket Elevators, Distributors, Screw Conveyors and Drag Conveyors
- Shed loading Belt Conveyors with trippers up to 1,000 TPH

- Batching systems utilizing ground level tanks up to 200 tonne each and rates of up to 8,000 CFH





**VIS is an AGI Brand.**

AGI is a leading provider of equipment solutions for agriculture bulk commodities including seed, fertilizer, grain, and feed systems with a growing platform in providing equipment and solutions for food processing facilities. AGI has manufacturing facilities in Canada, the United States, the United Kingdom, Brazil, South Africa and Italy and distributes its products globally.



140 Parkland Road, Oak Bluff, Manitoba, Canada R4G 0A5  
 204.897.6949 | [info@vis-aggrowth.com](mailto:info@vis-aggrowth.com) | [vis-aggrowth.com](http://vis-aggrowth.com)